

Beit Ula Town Profile



Prepared by



The Applied Research Institute - Jerusalem

Funded by



Spanish Cooperation



Azahar program

2009

Acknowledgments

ARIJ hereby expresses its deep gratitude to the Spanish Agency for International Cooperation for Development (AECID) for their funding of this project through the Azahar Program.

ARIJ is grateful to the Palestinian officials in the ministries, municipalities, joint services councils, village committees and councils, and the Palestinian Central Bureau of Statistics (PCBS) for their assistance and cooperation with the project team members during the data collection process.

ARIJ also thanks all the staff who worked throughout the past couple of years towards the accomplishment of this work.

Background

This booklet is part of a series of booklets, which contain compiled information about each city, town, and village in Hebron Governorate. These booklets come as a result of a comprehensive study of all localities in Hebron Governorate, which aims at depicting the overall living conditions in the governorate and presenting developmental plans to assist in developing the livelihood of the population in the area. It was accomplished through the 'Village Profiles and Azahar Needs Assessment'; a project funded by the Spanish Agency for International Cooperation for Development (AECID) and the Azahar Program.

The 'Village Profiles and Azahar Needs Assessment' was designed to study, investigate, analyze and document the socio-economic conditions and the needed programs and activities to mitigate the impact of the current unsecure political, economic and social conditions in Hebron Governorate with particular focus on the Azahar program objectives and activities concerning water, environment, and agriculture.

The project's objectives are to survey, analyze and document the available natural, human, socioeconomic and environmental resources, and the existing limitations and needs assessment for the development of the rural and marginalized areas in Hebron Governorate. In addition, the project aims at preparing strategic developmental programs and activities to mitigate the impact of the current political, social, and economic instability with the focus on the agricultural sector.

All locality profiles in Arabic and English are available online at <http://proxy.arij.org/vprofile/>

Table of Contents

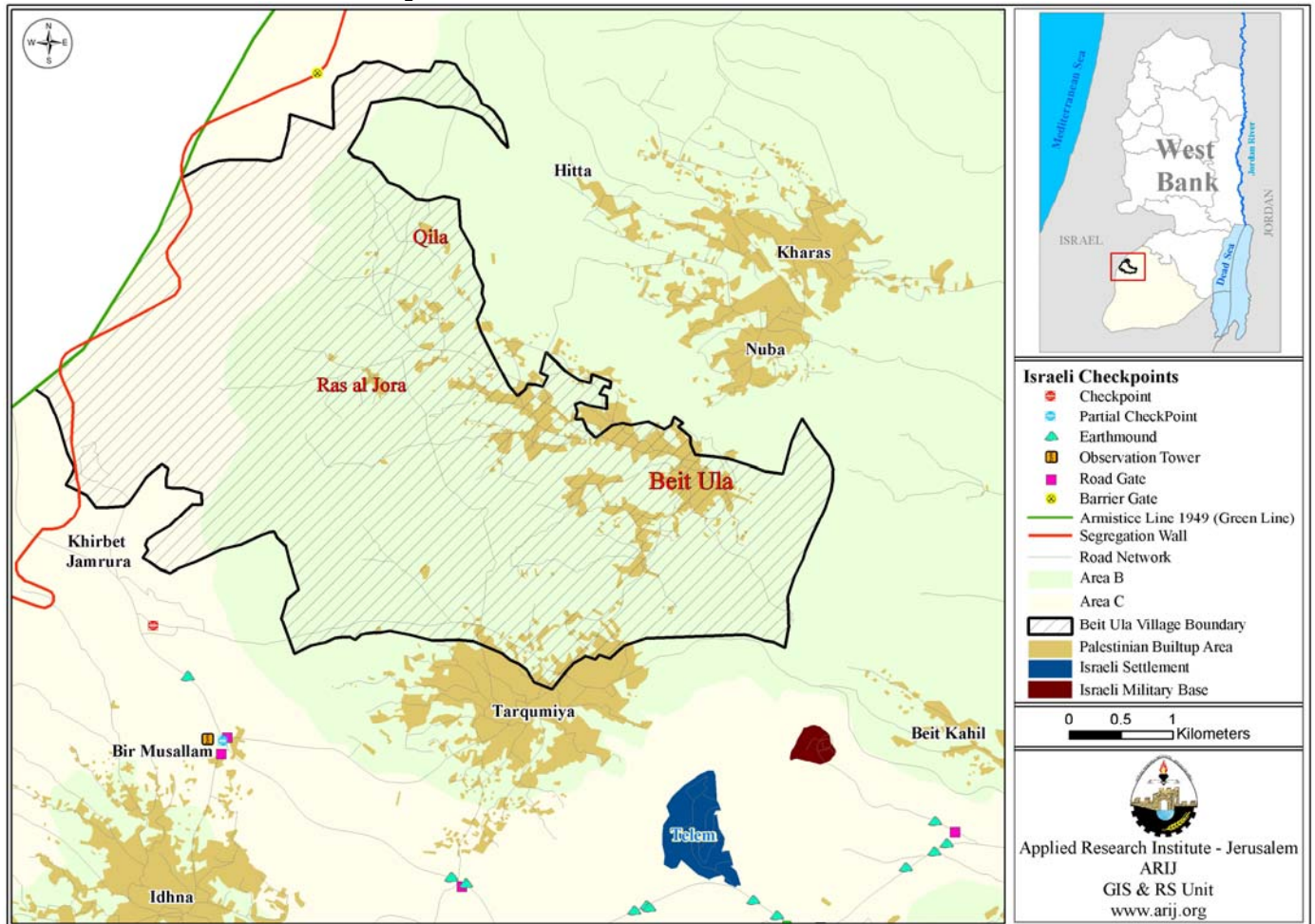
<i>Location and Physical Characteristics</i>	4
<i>History</i>	5
<i>Religious and Archeological Sites</i>	5
<i>Population</i>	6
<i>Education</i>	7
<i>Health Status</i>	8
<i>Economic Activities</i>	9
<i>Agricultural Sector</i>	11
<i>Institutions and Services</i>	13
<i>Infrastructure and Natural Resources</i>	13
<i>Impact of the Israeli Occupation</i>	14
<i>Implemented Development Plans and Projects</i>	14
<i>Locality Development Priorities and Needs</i>	15
<i>References</i>	16

Beit Ula Town Profile

Location and Physical Characteristics

Beit Ula is a town located 10 km northwest of Hebron city in the southern West Bank. The town is located to the north of Hebron Governorate and is bordered by Halhul to the east, Nuba to the north, the Green Line to the west, and Tarqumiya to the south.

Map 1: Beit Ula town location and borders



Beit Ula town is located at an elevation of 550 m above sea level, with a mean annual rainfall of 470 mm, average annual temperature of 18 °C and the average annual humidity of 60 % (ARIJ GIS). Beit Ula municipal area includes Beit Ula, Qila and Ras al Jora localities.

From 1976 to 1998, a Village Council governed Beit Ula town. By the year 1998, the Village Council was transferred to a Municipal Council appointed by the Ministry of the

Local Authority, and in 2005, a new Municipal Council was elected comprised of 11 elected members and 20 employees. The Municipal Council takes over local supervision of:

1. Social welfare and
2. Infrastructure development and maintenance of essential services, such as water, electricity, solid waste collection, etc.

History

Beit Ula is an old town that dates back to the Canaanite period, deriving its name from Beit "Al Awleya'a", meaning “the house of venerated people or virtuous persons”. It might be also derived from the Aramaic word 'aula' (in Arabic: أولى أو اولاء) meaning the first, the number one, or the virtuous. (Ad Dabbagh, 1991)

Photo of Beit Ula



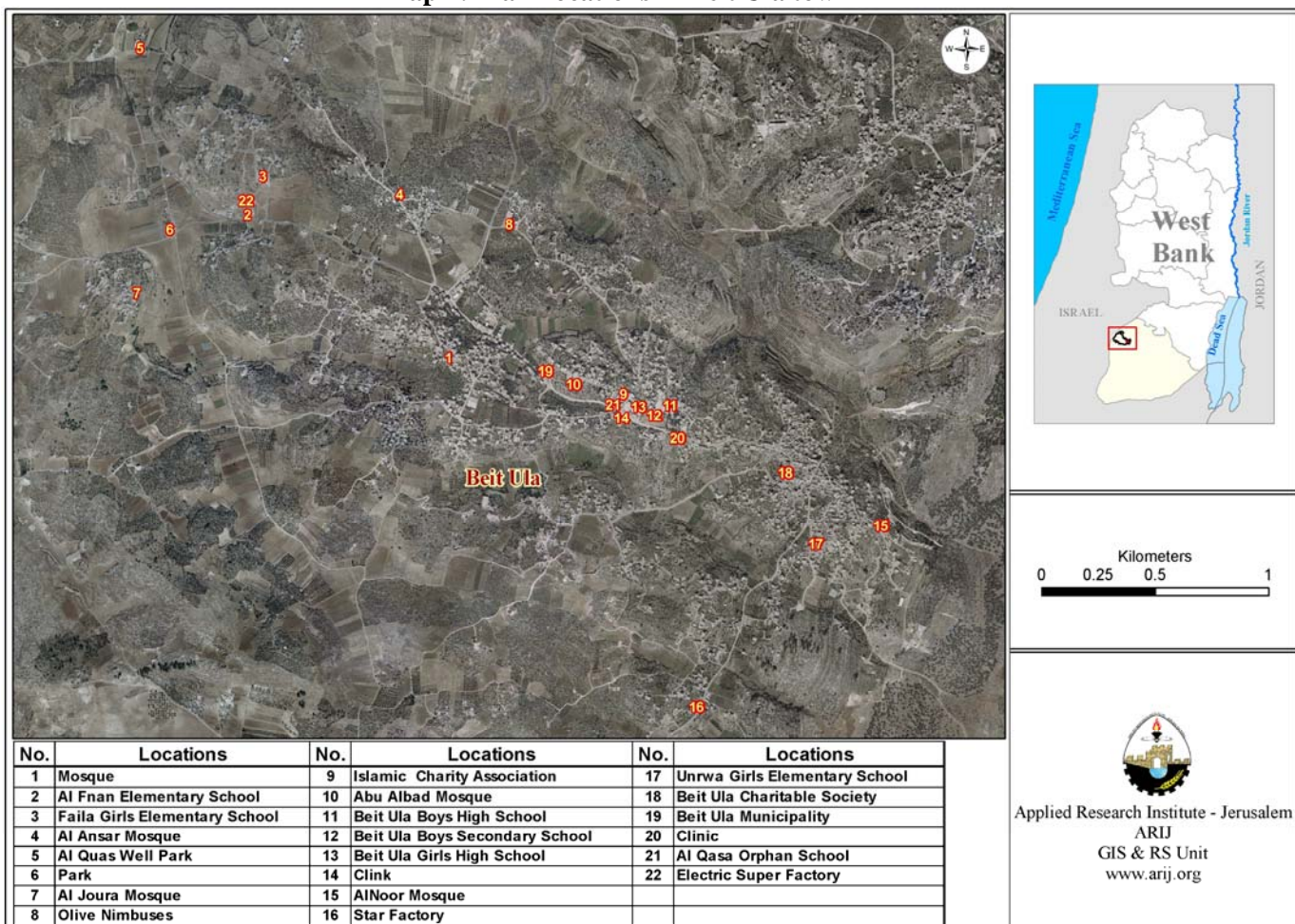
Religious and Archeological Sites

There are six mosques in the town: Abu Ma'bed Mosque, Um Alas Mosque, Huwara Mosque, Jabal Al Najjar Mosque, Al Bazay'ah Mosque, and Qila Mosque.

There are several historical and archeological sites in the town, however, they are underutilized for recreational or tourist purposes. The three sites are:

- Be'ir Al Qaws
- Qila archeological site
- Al Burj site

Map 2: Main locations in Beit Ula town



Population

According to the 2007 Palestinian Central Bureau of Statistics (PCBS) Census, the total population of Beit Ula in 2007 was approximately 10,885 people; 9,687 were living in Beit Ula, with 939 living in Qila and 268 in Ras al Jora. Of the total population, 5,555 were males and 5,330 were females. There were approximately 1,712 households living in 1,949 housing units. The population of Beit Ula town constituted 1.96 % of the total population of Hebron Governorate.

Localities	Male	Female	Total
Beit Ula*	4,939	4,739	9,687
Qila*	466	473	939
Ras al Jora*	150	118	268
Total**	5,555	5,330	10,885

*Estimated numbers based upon the 1997 Census

** Source: PCBS 2008, Population, Housing and establishment, Census -2007, Final Results

Age groups and gender

The 2007 census data classified the population of Beit Ula town by age group and sex, showing that 45.7 % were less than 15 years old, 50.3 % were in the 15-64 age group years and 2.6 % were 65 and above. Males constituted 51 % of the total population and the sex ratio was 104.2 males for every 100 females.

Families

The population of Beit Ula is comprised of six main families: Al A'mlah, Al Srahin, Al Adm , Al Farrashat , Al Ekel and Al Fawar'ah .

Migration

According to municipality data, about 100 people emigrated during the period of the second Intifada.

Education

According to the results of the (PCBS), Population, Housing and Establishment Census in 2007, 5.1% of Beit Ula residents were illiterate, with women comprising 75.4% of the total illiterate population. Of the literate population, 13.6% could read and write even though having received no formal education, 25.8% had completed elementary education, 34.7% had completed preparatory education and 20.8% had completed secondary and higher education. Table 2 shows the education status in Beit Ula by sex and educational attainment in 2007.

Sex	Illiterate	Can read & write	Elementary	Preparatory	Secondary	Associate Diploma	Bachelor	Higher Diploma	Master	PhD	Total
M	89	499	971	1,309	505	107	194	2	8	2	3,686
F	273	478	874	1,175	457	65	149	1	1	1	3,474
T	362	977	1,845	2,484	962	172	343	3	9	3	7,160

Source: PCBS, March 2009. Population, Housing and Establishment Census-2007, Final Results

The field survey data showed three levels of education in Beit Ula town: pre-school education (kindergartens), basic education and secondary education. Data also revealed that there were eight schools in the town, of which five were boys' schools, and three were girls' schools. Most schools in Beit Ula are supervised by the public sector. Table 3 shows the number of schools by name, stage, sex and the supervising authority.

No.	School name	Stage	Sex	Supervising Authority
1.	Beit Ula Boys Secondary School	Secondary	Male	Governmental
2.	Beit Ula Boys Elementary School	Elementary	Male	Governmental
3.	Beer Al Ques Boys Elementary School	Elementary	Male	Governmental
4.	Jaber Ibn Haeaan Elementary School	Elementary	Male	Governmental
5.	Beit Ula Girls Secondary School	Secondary	Female	Governmental
6.	Beit Ula Girls Elementary School	Elementary	Female	UNWARA
7.	Al Aqsa Boys School	Elementary	Male	Private
8.	Al Aqsa Girls School	Elementary	Female	Private

The data of the Ministry of Higher Education revealed that in the scholastic year of 2006/2007, there were 112 classes, 152 teachers and 3,673 students in the town (See table 4).

		Government	Private	UNWARA	Total
Male	No. of Schools	4	1	-	5
	No. of class	50	8	-	58
	No. of Teachers	67	14	-	81
	No. of Students	1599	182	-	1781
Female	No. of Schools	1	-	1	2
	No. of class	11	-	33	44
	No. of Teachers	17	-	42	59
	No. of Students	368	-	1307	1675
Co-education	No. of Schools	-	1	-	1
	No. of class	-	10	-	10
	No. of Teachers	-	12	-	12
	No. of Students	-	217	-	217

Source: ARIJ Data Base – 2006

Data from 2007 shows two kindergartens in Beit Ula: the Beit Ula Charitable Society Kindergarten, established by Beit Ula Charitable Society, and Al Aqsa Kindergarten, established by the Islamic Charitable Society. Both kindergartens provide pre-school education services to a total of 109 children.

Town officials state that there are obstacles facing the educational process in the town, citing the lack of classes and need for additional educational facilities as main concerns of the municipality.

Health Status

Several institutions provide health services in Beit Ula. One health center, Al Iman Medical Center, is supervised by Beit Ula Charitable Society, and provides health services to the residents. In addition, there are six private clinics, one governmental clinic

and three dental clinics in the town. There are also other health facilities in the town such as four medical laboratories, four pharmacies, one Maternity & Pediatric Center, and an ambulance (See table 5).

Institution	Governmental	Private	Charitable
Physician Clinic	1	6	-
Dental Clinic	-	3	-
Health Clinic	-	-	1
X- Ray Centre	-	-	-
Medical Lab	1	2	1
Maternity & Pediatric Center	1	-	-
Pharmacy	-	4	-
Other (Physiotherapy)	-	-	-
Total	3	15	2

However, Beit Ula town still suffers from many obstacles and problems in the health sector, including

1. A lack of specialist clinics, and
2. The absence of adequate governmental medical services.

For emergencies that are incurable in the town, patients are sent to health facilities in Tarqumiya town or Hebron city, 3 km and 16 km respectively from Beit Ula.

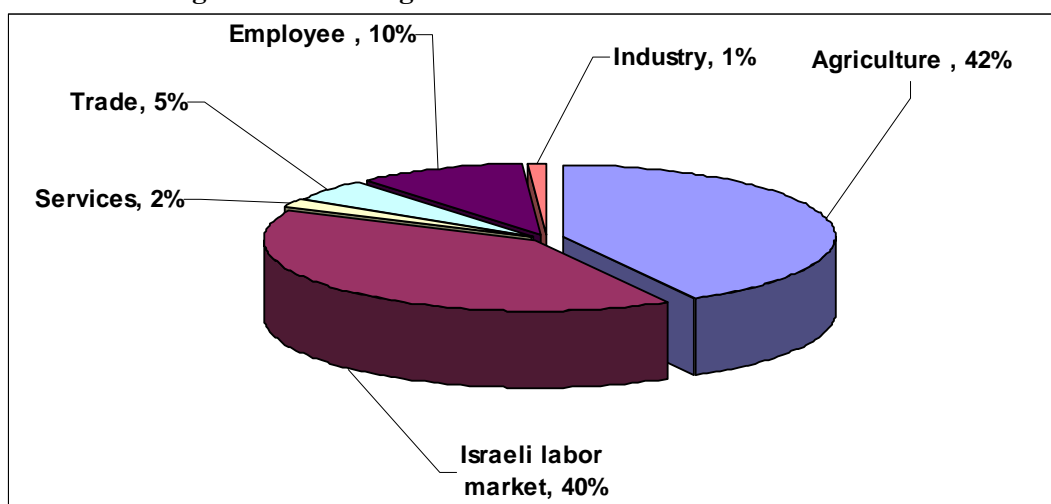
Economic Activities

Two major economic activities play a role in Beit Ula economy. The agricultural sector is the most fundamental economic activity in the town with approximately 42% of the town's total population involved in agricultural activities. The Israeli Labor Market is the second main source of income for Beit Ula residents with roughly 40% of the total population dependent on the Israeli market as an exchange of work for capital.

ARIJ survey indicated that the shares of the population working in the various sectors of the economy were:

- The agricultural sector 42 %,
- Israeli labor market 40 %.
- The employee sector 10 %,
- The trade sector 5 %,
- The services sector 2 %,
- The industrial sector 1 %.

Figure 1: Percentage of economic activities in Beit Ula town



The town has a number of economic institutions including the “Super Nimr” Wrought Iron Doors Factory, “Al Anan” Electric Refrigerator Factory, “Star” Paint Factory, and "Light Ceiling" Electric Lamp Manufactory. In addition, there are five clothing shops, four butchers, five blacksmith workshops, six carpentry workshops, ten shops for services, and more than one hundred groceries and other shops.

Based on ARIJ survey in 2007, the social groups most affected in the town by the Israeli restrictions during the second Intifada are:

- 1) Workers previously employed on the Israeli labour market,
- 2) Families with six or more individuals,
- 3) Small-holder farmers,
- 4) Small businesses, and
- 5) Housekeepers and children.

Labor Force

In 2007, the labor force in Beit Ula town was 7,160, of which 30.4% were economically active and 69.6% were economically inactive. Of the economically active, 79% were employed. The largest groups of the economically inactive population were students and housekeepers, constituting 56% and 34.3% of that population respectively. Table 6 shows the labor force construction in Beit Ula town.

Table 6: Beit Ula population (10 years and above) by sex and employment status

Sex	Economically Active				Not Economically Active						Total
	Employed	Currently Unemployed	Unemployed (Never worked)	Total	Students	House keeping	Unable to work	Not working & not looking for work	Other	Total	
M	1,571	201	214	1,986	1,391	13	183	48	65	1700	3,686
F	152	7	35	194	1,392	1,693	168	17	10	3,280	3,474
T	1,723	208	249	2,180	2,783	1,706	351	65	75	4,980	7,160

Source: PCBS, March 2009. Population, Housing and Establishment Census-2007, results

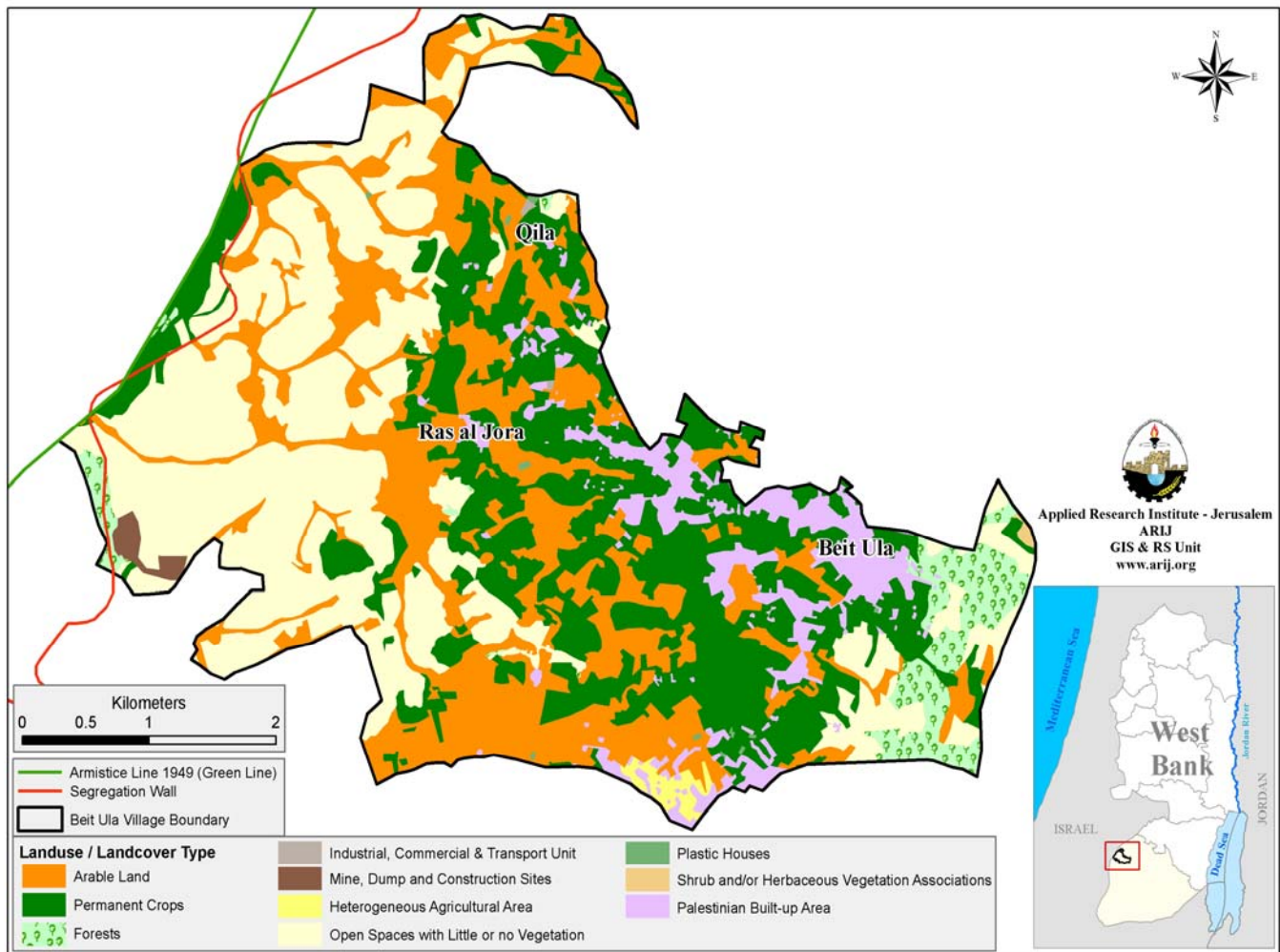
Agricultural Sector

Beit Ula is an agricultural town and, as mentioned above, includes a vast area of arable land, with approximately 44% of residents engaged in agricultural activities. Beit Ula town lies on a total area of 24,000 dunums; 16,800 dunums are considered arable land, though only 7,884 dunums are cultivated.

Total Area	Arable Land		Built up Area	Forests Area	Open Spaces and Rangelands
	Cultivated Area	Uncultivated Area			
24,000	7,884	8,916	1,200	850	5,150

Source: Palestinian Ministry of Agricultural (MoA), 2006

Map 3: Land use/ land cover and Segregation Wall route in Beit Ula town



There are about 23 dunums of greenhouses, but no tunnels in Beit Ula town. 14 of these dunums are used for growing cucumbers.

Most agriculture in Beit Ula is rain-fed. However, ARIJ field survey data indicates that farmers also depend on springs, cisterns and the water network to irrigate crops. The main crops cultivated in the town are olive trees, plums, nuts, fruit, field crops and vegetables.

Table 8 shows the different types of rain-fed and irrigated open cultivated vegetables in the town of Beit Ula. The rain-fed fruity vegetables are the most cultivated with an area of about 321 dunums. The most common vegetables cultivated within this area are gumbo and squash.

Fruity vegetables		Leafy vegetable		Green legumes		Bulbs		Other vegetables		Total area	
Rf	Irr	Rf	Irr	Rf	Irr	Rf	Irr	Rf	Irr	Rf	Irr
321	31	7	18	25	4	0	13	2	65	355	131

Rf: Rain-fed, Irr: Irrigated

There are two types of aromatic medical plants in the town of Beit Ula, thyme and mint, which cover a total area of about 4 dunums.

In the town of Beit Ula, there is a total area of 4,853 dunums planted with olive trees. Other trees planted in the area are mostly grape vines, apricot and fig trees.

Olives		Citrus		Stone-fruits		Pome fruits		Nuts		Other fruit		Total area	
Rf	Irr	Rf	Irr	Rf	Irr	Rf	Irr	Rf	Irr	Rf	Irr	Rf	Irr
4,853	0	0	0	161	0	0	0	147	0	380	0	5,541	0

Rf: Rain-fed, Irr: Irrigated

Table 10 shows the total field crops cultivated in the town of Beit Ula. Cereals, in particular wheat, white corn and barley, are the most cultivated crops, covering an area of about 1,360 dunums. In addition, the cultivation of dry legume crops, mostly lentils, and forage crops, such as vetch, is common in the town of Beit Ula.

Cereals		Bulbs		Dry legumes		Oil crops		Seeds		Forage crops		Stimulating crops		Other crops		Total area	
Rf	Irr	Rf	Irr	Rf	Irr	Rf	Irr	Rf	Irr	Rf	Irr	Rf	Irr	Rf	Irr	Rf	Irr
1,360	0	25	0	175	0	0	0	0	0	85	0	30	0	0	0	1,675	0

Rf: Rain-fed, Irr: Irrigated

Residents of Beit Ula rear and keep livestock with about 5% of residents breeding domestic animals, such as sheep, goats and chicken, in addition to keeping 199 beehives.

Cows*	Sheep	Goats	Camels	Horses	Donkeys	Mules	Broilers	Layers	Bee Hives
164	3,600	1,000	0	5	55	10	40,000	20,000	199

*Including cows, bull calves, heifer calves and bulls

Though insufficient, approximately 40 km of agricultural roads are heavily used by tractors and other agricultural machinery in Beit Ula. There is a major need for new roads to cover the vast agricultural area in the town.

Institutions and Services

The lifestyle in rural Beit Ula town differs greatly from that of urban areas, mainly because available services, such as police, schools, fire stations, and libraries are limited in scope or unavailable. However, several major institutes and services exist in the town and serve the residents well. There are both a Post Office and an office of Social Affairs, in addition to other seven institutes providing public services, which include:

1. Beit Ula Municipality; established in 1998 with a new Council of 11 members elected in 2005.
2. Islamic Charitable Society
3. Beit Ula Charitable Society
4. Women's Club
5. Sport's Club
6. Cultural Club
7. Al Afaq Club

Type of institution						
Governmental	Charitable	Women	NGO	Agriculture	Sports	Religious
2	2	1	1	0	1	6

Infrastructure and Natural Resources

- **Telecommunication Services:** Beit Ula town is connected to a telecommunication network; approximately 60 % of the housing units are connected to the network.
- **Water Services:** Beit Ula has been connected to the water network since 1974. Provided by the Palestinian Water Authority (PWA), almost 70% of town households are connected to the network. Harvesting wells and 10 natural springs are alternative resources to the water network for the domestic and agricultural needs of the town. The main problems regarding water services are:
 - 1) The old and deteriorating water network.
 - 2) Loss of water pressure in the summer.

- **Electricity Services:** In 1981, Beit Ula was connected to an electric network provided by the Israeli Electric company "Al Qutriya", and 90% of the town housing units are currently connected to the network. The electric network in the town is in need of reconstruction and restoration, with an additional need for electric generators.
- **Solid Waste Collection:** The Municipality and the Joint Services Council operate solid waste management in Beit Ula. According to the data field survey conducted by ARIJ, approximately 20 tons of solid waste is generated yearly in Beit Ula. Waste is collected by trucks, owned by the Municipality, and then transported to a regional dumping site five km away, that is operated by the Joint Services Council.
- **Sewage Disposal Facilities:** The sewage disposal system in Beit Ula is chronically under-funded. The town lacks a sewage disposable network; therefore, the bulk of the domestic and agricultural wastewater is discharged and disposed of in cesspits. This improper disposal of sewage is considered one of the main reasons of groundwater pollution in the area.
- **Transportation Services:** There are about 64 km of internal roads in Beit Ula town. Approximately 4 km of main roads and 10 km of connecting roads are surfaced and in a good condition, with an additional 10 km of surfaced connecting roads in poor condition. In addition, there are 40 km of unpaved agricultural roads. Public transportation in Beit Ula includes three buses and six taxis. However, the transportation sector in the town suffers from the Israeli checkpoints and barriers, poor road conditions, and shortage of public transportation services.

Impact of the Israeli Occupation

Beit Ula borders the Green Line, and in November 2004, the Israeli Authorities commenced the construction of the Segregation Wall on the west side of the town. According to Beit Ula Municipality, the Israeli Authorities confiscated approximately 1,500 dunums of town land, 1,500 dunums will be isolated behind the wall. In addition, 2,000 trees have been uprooted. Upon completion, a five km section of the Segregation Wall will be constructed inside the Green Line on Beit Ula land near the western town boundary.

Implemented Development Plans and Projects

The Beit Ula municipality established a development plan. Since 2004, the municipality has implemented several projects funded by foreign donors. See Table 13 for specific projects and funding sources.

No.	Project name	Type	Funded by
1	Open and Rehabilitation of Internal Roads	Infrastructure	Municipal council
2	Construction of new building for the municipality	Infrastructure	Japanese Government
3	Construction of Internal electricity Networks	Infrastructure	Norwegian Government

Locality Development Priorities and Needs

According to Beit Ula Municipality, the town suffers from a shortage of services and is in need of infrastructure development. Table 14 shows development priorities and needs in the town.

No.	Sector	Strongly Needed	Needed	Moderately Needed	Not Needed	Notes
Infrastructural Needs						
1	Opening and Pavement of Roads	*				36 km ^
2	Construction of New Water Networks	*				
3	Rehabilitation of Old Water Networks		*			
4	Construction of Water Reservoirs				*	
5	Extending the Water Network to cover New Built up Areas			*		
6	Construction of Sewage Disposal Network	*				
Health Needs						
1	Building of New Clinics or Health Care Centre	*				
2	Rehabilitation of Old Clinics or Health Care Centres			*		
3	Purchasing of Medical Equipments and Tools			*		
Educational Needs						
1	Building of New Schools	*				
2	Rehabilitation of Old Schools			*		
3	Purchasing of New Equipments for Schools			*		
Agriculture Needs						
1	Rehabilitation of Agricultural lands			*		
2	Building Cisterns			*		
3	Construction of Barracks for Livestock			*		
4	Veterinary Services			*		
5	Seeds and Hay for Animals			*		
6	Rehabilitation of Greenhouses			*		
7	Field Crops Seeds			*		
8	Plants and Agricultural Supplies			*		

^ 3 km: 7 km main roads, 9 internal roads and 20 km agricultural roads

References:

- Palestinian Central Bureau of Statistics. *Population, Housing and Establishment Census- Final Results*. Ramallah, Palestine. 1997 -2007.
- Ad Dabbagh, Mustafa. *Palestine Our Homeland*.: Kufr Qare', Palestine: Dar Al Huda Press, 1991. (*In Arabic*)
- Applied Research Institute – Jerusalem (ARIJ). *GIS Database*. 2006-2009.
- Ministry of Agriculture. *Agricultural Status Database in Hebron Governorate*. 2006.
- Ministry of Higher Education. *Educational Status Database*. 2006-2007.