

Rafada Village Profile



Prepared by



**The Applied Research Institute – Jerusalem
ARIJ**

Funded by



Spanish Cooperation



Azahar program

2009

Acknowledgments

ARIJ hereby expresses its deep gratitude to the Spanish Agency for International Cooperation for Development (AECID) for their funding of this project through the Azahar Program.

ARIJ is grateful to the Palestinian officials in the ministries, municipalities, joint services councils, village committees and councils, and the Palestinian Central Bureau of Statistics (PCBS) for their assistance and cooperation with the project team members during the data collection process.

ARIJ also thanks all the staff who worked throughout the past couple of years towards the accomplishment of this work.

Background

This booklet is part of a series of booklets, which contain compiled information about each city, town, and village in Hebron Governorate. These booklets come as a result of a comprehensive study of all localities in Hebron Governorate, which aims at depicting the overall living conditions in the governorate and presenting developmental plans to assist in developing the livelihood of the population in the area. It was accomplished through the 'Village Profiles and Azahar Needs Assessment'; a project funded by the Spanish Agency for International Cooperation for Development (AECID) and the Azahar Program.

The 'Village Profiles and Azahar Needs Assessment' was designed to study, investigate, analyze and document the socio-economic conditions and the needed programs and activities to mitigate the impact of the current unsecure political, economic and social conditions in Hebron Governorate with particular focus on the Azahar program objectives and activities concerning water, environment, and agriculture.

The project's objectives are to survey, analyze and document the available natural, human, socioeconomic and environmental resources, and the existing limitations and needs assessment for the development of the rural and marginalized areas in Hebron Governorate. In addition, the project aims at preparing strategic developmental programs and activities to mitigate the impact of the current political, social, and economic instability with the focus on the agricultural sector.

All locality profiles in Arabic and English are available online at <http://proxy.arij.org/vprofile/>

Table of Contents

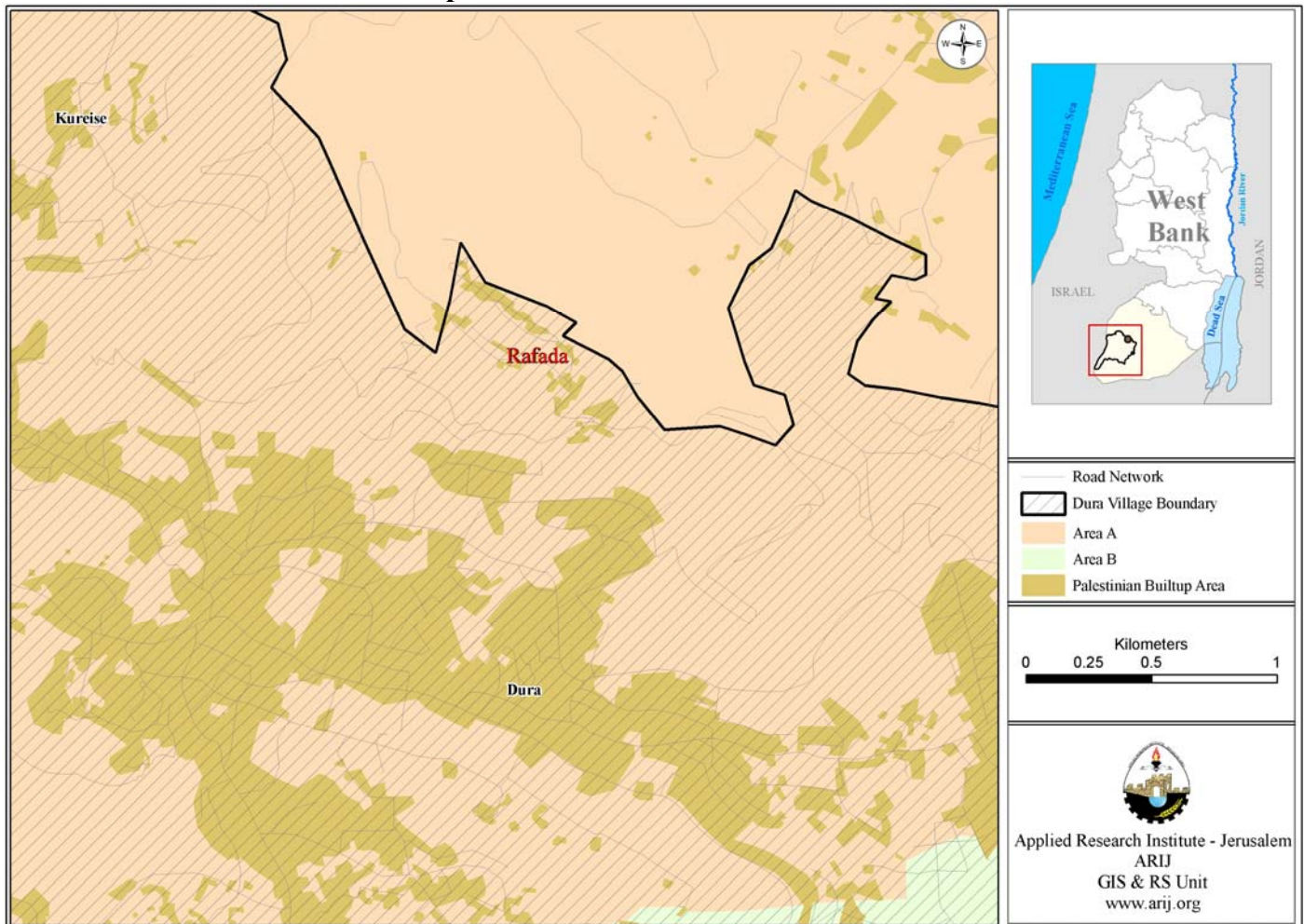
<i>Location and Physical Characteristics</i>	<u>4</u>
<i>History</i>	<u>5</u>
<i>Religious and Archaeological Sites</i>	<u>5</u>
<i>Demography and Population</i>	<u>6</u>
<i>Education</i>	<u>7</u>
<i>Health Status</i>	<u>7</u>
<i>Economic Activities</i>	<u>7</u>
<i>Agricultural Sector</i>	<u>9</u>
<i>Institutions and Services</i>	<u>10</u>
<i>Infrastructure and Natural Resources</i>	<u>10</u>
<i>Impact of the Israeli Occupation</i>	<u>11</u>
<i>Development Plans and Projects</i>	<u>11</u>
<i>Locality Development Priorities and Needs</i>	<u>12</u>
<i>References</i>	<u>13</u>

Rafada Village Profile

Location and Physical Characteristics

Rafada is a village in Dura area which is located 5 km west of Hebron City in the southern part of the West Bank. The village is bordered by Hebron City to the east, Taffuh village to the north and Dura city to the west and south.

Map1: Rafada location and borders



The total area of the village is estimated to be 1,500 dunums, of which about 100 dunums are Palestinian built-up areas, 1,200 dunums are agricultural land, and 200 dunums are forest and open spaces area.

Rafada village extends over a mountainous area west of Hebron, with an elevation of 749 m above sea level. The mean annual rainfall in the village is 436 mm; the average annual temperature is 16 °C, and the average annual humidity is 61% (ARIJ GIS).

The village is considered a rural. The village is governed by project committee, which was established in 2001, with a 5 members. It currently has no permanent building. The services provided by the committee are: infrastructure services including electricity, solid waste collection in addition to social and human services to the residents.

History

According to the field work survey data, Rafada village established in 1920 in the time of British mandate. The origin of Rafada's residents comes from Dura City.

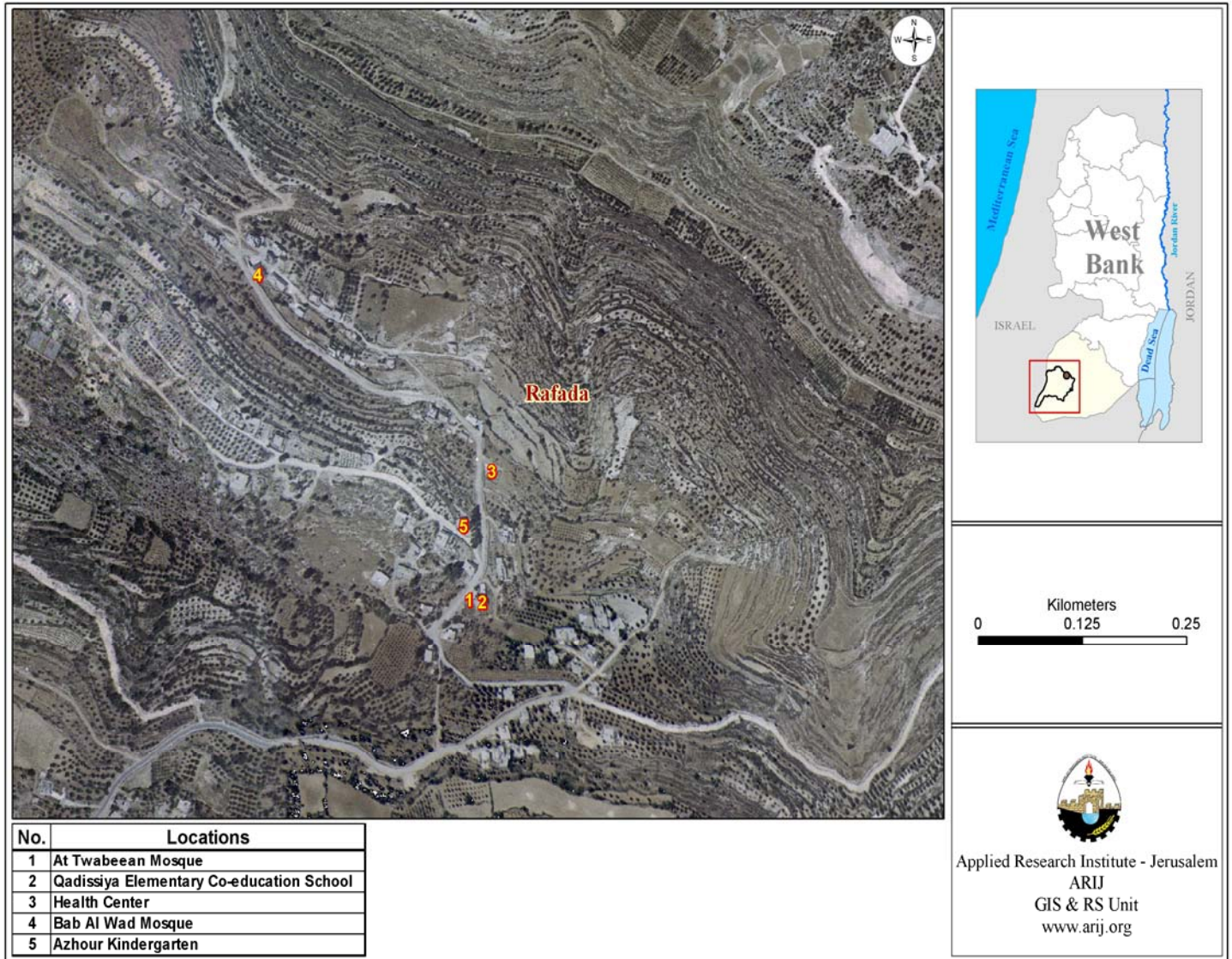
Photos of Rafada village



Religious and Archaeological Sites

In Rafada village, there are two mosques: At Tawabeean Mosque and Bab Al Wad Mosque. In terms of archeological sites, there are no historical sites in the village.

Map 2: Main locations in Rafada village



Demography and Population

The total population of Rafada, in 2007, is estimated to be 457. This is an estimate number based on the Palestinian Central Bureau of Statistics (PCBS) Census of 1997, of whom 225 inhabitants were males and 232 were females.

Families

The population of Rafada comprises of the families: Al-Saied Ahmad family, Ibrawesh family, Al Sharwna family, Al Amaira family, Al Fqeaat family and Ar Rjowb family.

Education

Rafada village was not counted as a single locality during the 2007 PCBS Census. Based upon the PCBS divisions, Rafada village was counted as part of Dura village. Therefore, the labor force data for Rafada village is not available. Table 1 shows the education status in Dura, Rafada, Al Hijra, Kureise and At Tabaqa.

Sex	Illiterate	Can read & write	Elementary	Preparatory	Secondary	Associate Diploma	Bachelor	Higher Diploma	Master	PhD	Total
M	295	1,072	2,196	2,975	1,627	510	981	19	126	51	9,852
F	784	1,125	1,928	2,770	1,621	457	933	12	30	2	9,662
T	1,079	2,197	4,124	5,745	3,248	967	1,914	31	156	53	19,514

Source: PCBS, 2009. Population, Housing and Establishment Census-2007, Final Results

This data includes population figures from the villages of Dura, Rafada, Al Hijra, Kureise and At Tabaqa

The field survey data indicated that there is one co-education elementary school in the village. The school is “Al Qadissiya Elementary Co-education School” which is supervised by government sector. As there is no preparatory and secondary schools in Rafada village, most students travel to Dura city schools to complete their school education which about 3 km far. The educational sector in the village is suffering from many obstacles, which include:

- Lack of schools for preparatory and secondary education
- Overcrowded classes.
- The high cost of transportation.

Health Status

The village lacks any kind of health services; there are no clinics, ambulance and pharmacies. There is only one simple governmental health Center that provides health services once a week. In emergency cases, patients have to travel a distance of 3 km to reach Dura city for medical treatment.

The obstacles and problems that face the health sector in Rafada are:

1. Shortage of modern health center providing health services to the residents on full time.
2. There is no Pharmacy in the village.
3. There are no private physicians.

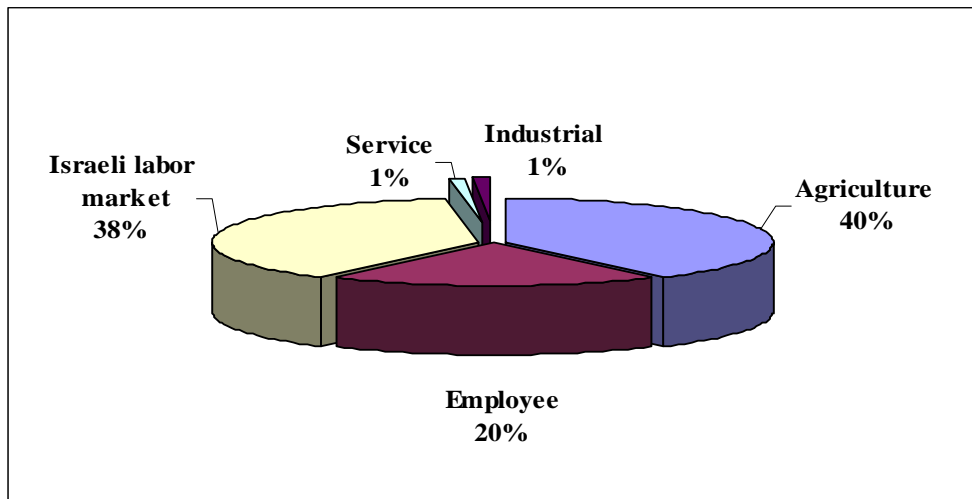
Economic Activities

The economy of Rafada is dependent on the agriculture sector and Israeli labor market, nearly 40% of labor force in the village works in agriculture sector and 38% in the Israeli labour market. 20% of the residents are dependent on the public and private employment sector.

According to village officials’ estimates, the economic base of the village consists of the following sectors:

- Agricultural Sector 40%,
- Government or Other Employees 20%,
- The Israeli Labor Market 38%,
- The service sector 1 %,
- The industrial sector 1 %.

Figure 1: Percentage of economic activity in Rafada village.



Since the village is small and mainly dependent on the Dura city market, the village lacks any economic institutions, there is just one small grocery in the village.

Based on the ARIJ survey conducted in 2007 in Hebron Governorate localities, the data indicated that the social groups most affected in the village by Israeli restrictions during the second Intifada were: 1) Families maintaining 6 or more individuals, 2) Workers previously employed in the Israeli market, 3) Small-scale farmers, 4) Housewives and children.

Labor Force

Rafada village was not counted as a single locality during the 2007 PCBS Census. Based upon the PCBS divisions, Rafada village was counted as part of Dura village. Therefore, the labor force data for Rafada village is not available. Table 1 shows the labor force status in Dura, Rafada, Al Hijra, Kureise and At Tabaqa.

Table 2: Dura City population (10 years and above) by sex and employment status-2007

Sex	Economically Active				Not Economically Active						Total
	Employed	Currently Unemployed	Unemployed (Never Worked)	Total	Students	House keeping	Unable to work	Not working & Not looking For Work	Other	Total	
M	4,393	327	361	5,081	3,906	12	573	103	177	4,771	9,852
F	1,048	45	181	1,274	3,943	3,863	485	24	73	8,388	9,662
T	5,441	372	542	6,355	7,849	3,875	1,058	127	250	13,159	19,514

Source: PCBS, March 2009. Population, Housing and Establishment Census-2007, Final Results

This data includes population figures from the villages of Dura, Rafada, Al Hijra, Kureise and At Tabaqa

Agricultural Sector

Rafada is agricultural village and as mentioned above it has a large area most of which is arable land. There is about 1,200 dunums are cultivated lands and 40% of the residents are engaged in agriculture activities. There are about 200 dunums arable land but this is uncultivated due to lack of agriculture labor force, lack of water and unfeasibility of agriculture. The main crops cultivated in the village are olive tree, grapes, and field crops.

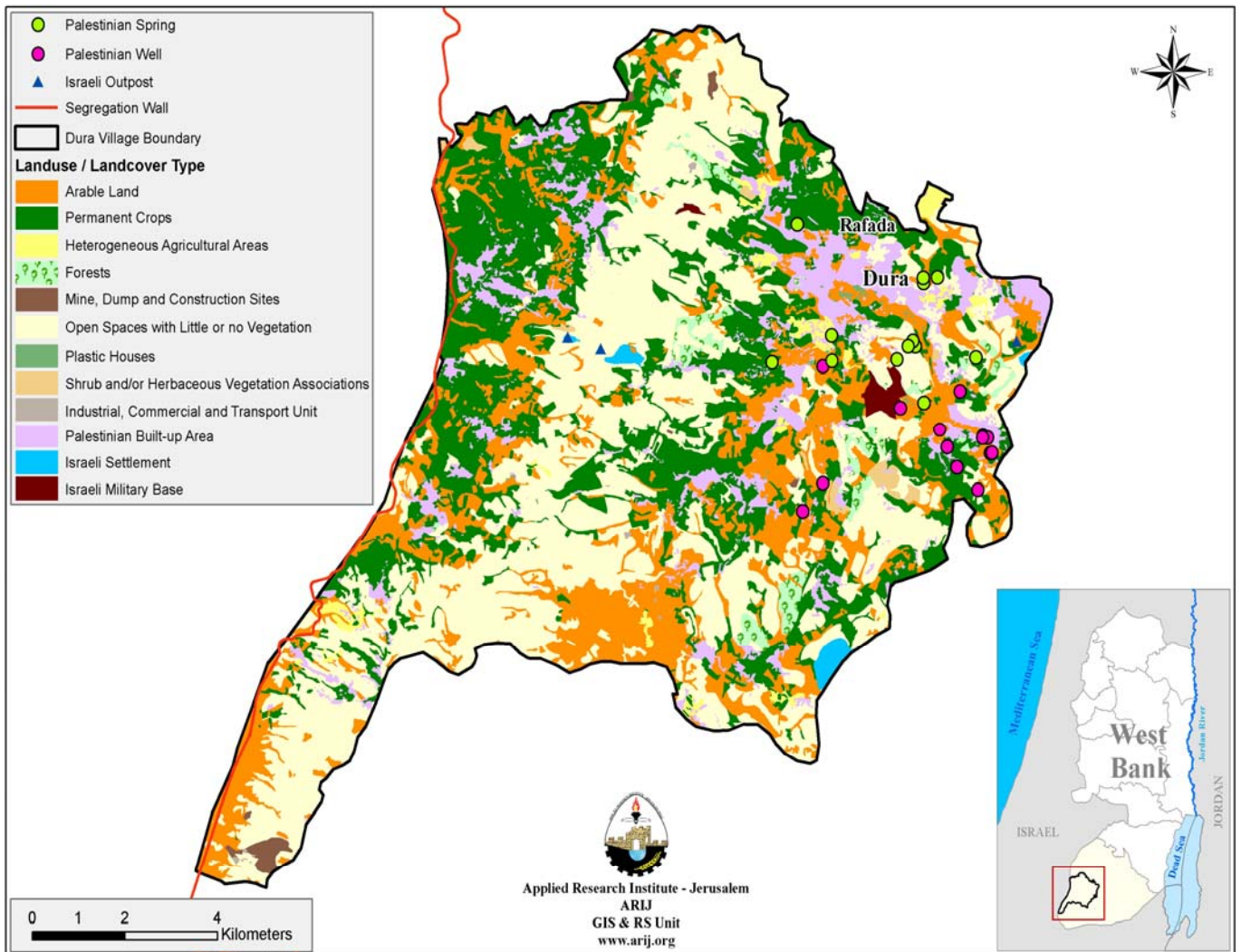
There are about 3 km of agricultural roads in Rafada suitable for driving tractors and other agricultural machines but these are insufficient and the village is in need of new roads to cover the agricultural area in the village.

The field survey indicated that Rafada's residents also rear livestock. About 10% of the residents keep animals; the data reveals that there are 30 sheep and 70 goats in addition to 3 bird farming with 2,500 birds.

The agriculture in the village affected by Israeli procedures, Israeli forces had uprooted 30 olive trees, 30 vineyards trees, 50 stone trees and 20 other trees.

The shortage of water and increasing of forage and feed prices are the main problems facing of planting and animals of agriculture sector in the village.

Map 3: Land use/ land cover and the Segregation Wall in Rafada village



Institutions and Services

Rafada village is a small village; it receives most of services from Dura city and other neighboring villages. The main institution in the village is the project committee established in 2001, which arranges most of the residents' services.

Infrastructure and Natural Resources

Telecommunication Services: Rafada village is connected to the telecommunication network, and about 60% of the housing units in Rafada village are connected to the network.

Water Services: Rafada village is not connected to any water network. The alternative resources of water used in the village are wells and water tanks.

Electricity Services: Rafada village had been connected to the electricity network since 1987. Approximately 80% of housing units in the village are connected to the network. Rafada village project committee manages the distribution of electricity which is supplied from South Electricity Company. The main problems of the electricity in the village are weakness of electricity current and insufficient of street lights.

Sewage Disposal Facilities: Rafada village is not connected to any sewage disposal network, and the waste water is disposed of in cesspits.

Solid Waste Collection Services: Rafada has a solid waste services system, whereas the project committee manages the solid waste collection and sends it to Dura dumping site.

Transportation Facilities: Rafada village severe lacks an official and legal transportation services. The village now is serving by illegal vehicles which, transport people to Dura city.

In terms of road qualities, 2 km of main roads are unpaved, and 1 km of internal roads are unpaved. There are about 3 km of agricultural roads that are also unpaved.

Impact of the Israeli Occupation

Rafada is not subject to direct Israeli aggressions or procedures. There is no settlements or military base on the land of Rafada or near it. As mentioned above the agriculture sector has been subject to Israeli procedures in the beginning of second Intifada in 2000. Israeli forces have uprooted 30 olive trees, 30 vineyards trees, 50 stone trees and 20 other trees.

Development Plans and Projects

Village officials cite that since the eruption on the Second Intifada, the villages implement only one project for the residents “open Wadi Soud / Rafada main road”, the project is funded by the Netherlands Government

Locality Development Priorities and Needs

According to Rafada project committee, the village suffers from a shortage of many infrastructure and services needs. Table 3 below shows the development priorities in the village.

No.	Sector	Strongly Needed	Needed	Moderately Needed	Not Needed	Notes
Infrastructural Needs						
1.	Opening and Pavement of Roads	*				6 km ^
2.	Construction of New Water Networks	*				5 km
3.	Rehabilitation of Old Water Networks				*	
4.	Construction of Water Reservoirs	*				500 cubic meter
5.	Extending the Water Network to cover New Built up Areas				*	
6.	Construction of Sewage Disposal Network		*			
Health Needs						
1	Building of New Clinics or Health Care Centre				*	
2	Rehabilitation of Old Clinics or Health Care Centres	*				
3	Purchasing of Medical Equipments and Tools	*				
Educational Needs						
1	Building of New Schools	*				Secondary
2	Rehabilitation of Old Schools	*				Elementary
3	Purchasing of New Equipments for Schools	*				
Agriculture Needs						
1	Rehabilitation of Agricultural lands	*				200 dunums
2	Building Cisterns	*				30 cisterns
3	Construction of Barracks for Livestock		*			4
4	Veterinary Services	*				
5	Seeds and Hay for Animals	*				
6	Rehabilitation of Greenhouses	*				4
7	Field Crops Seeds	*				
8	Plants and Agricultural Supplies	*				

^ 2 km main roads, 1 km internal roads and 3 km agriculture roads

References:

- Applied Research Institute – Jerusalem (ARIJ). *GIS Database*. 2006-2009.
- Ministry of Agriculture. *Agricultural Status Database in Hebron Governorate*. 2006.
- Ministry of Higher Education. *Educational Status Database*. 2006-2007.
- Palestinian Central Bureau of Statistics. *Population, Housing and Establishment Census- Final Results*. Ramallah, Palestine. 1997 -2007.