

‘Arab ar Rashaiyda Village Profile



Prepared by



The Applied Research Institute – Jerusalem

Funded by



Spanish Cooperation



Azahar Program

2010

Acknowledgments

ARIJ hereby expresses its deep gratitude to the Spanish agency for International Cooperation for Development (AECID) for their funding of this project through the Azahar Program.

ARIJ is grateful to the Palestinian officials in the ministries, municipalities, joint services councils, village committees and councils, and the Palestinian Central Bureau of Statistics (PCBS) for their assistance and cooperation with the project team members during the data collection process.

ARIJ also thanks all the staff who worked throughout the past couple of years towards the accomplishment of this work.

Background

This booklet is part of a series of booklets, which contain compiled information about each city, town, and village in Bethlehem Governorate. These booklets came as a result of a comprehensive study of all localities in Bethlehem Governorate, which aims at depicting the overall living conditions in the governorate and presenting developmental plans to assist in developing the livelihood of the population in the area. It was accomplished through the "Village Profiles and Azahar Needs Assessment," the project funded by the Spanish Agency for International Cooperation for Development (AECID) and the Azahar Program.

The "Village Profiles and Azahar Needs Assessment" was designed to study, investigate, analyze and document the socio-economic conditions and the needed programs and activities to mitigate the impact of the current unsecure political, economic and social conditions in Bethlehem Governorate with particular focus on the Azahar program objectives and activities concerning water, environment, and agriculture.

The project's objectives are to survey, analyze, and document the available natural, human, socioeconomic and environmental resources, and the existing limitations and needs assessment for the development of the rural and marginalized areas in Bethlehem Governorate. In addition, the project aims at preparing strategic developmental programs and activities to mitigate the impact of the current political, social, and economic instability with the focus on the agricultural sector.

All locality profiles in Arabic and English are available online at <http://proxy.arij.org/vprofile>.

Table of Content

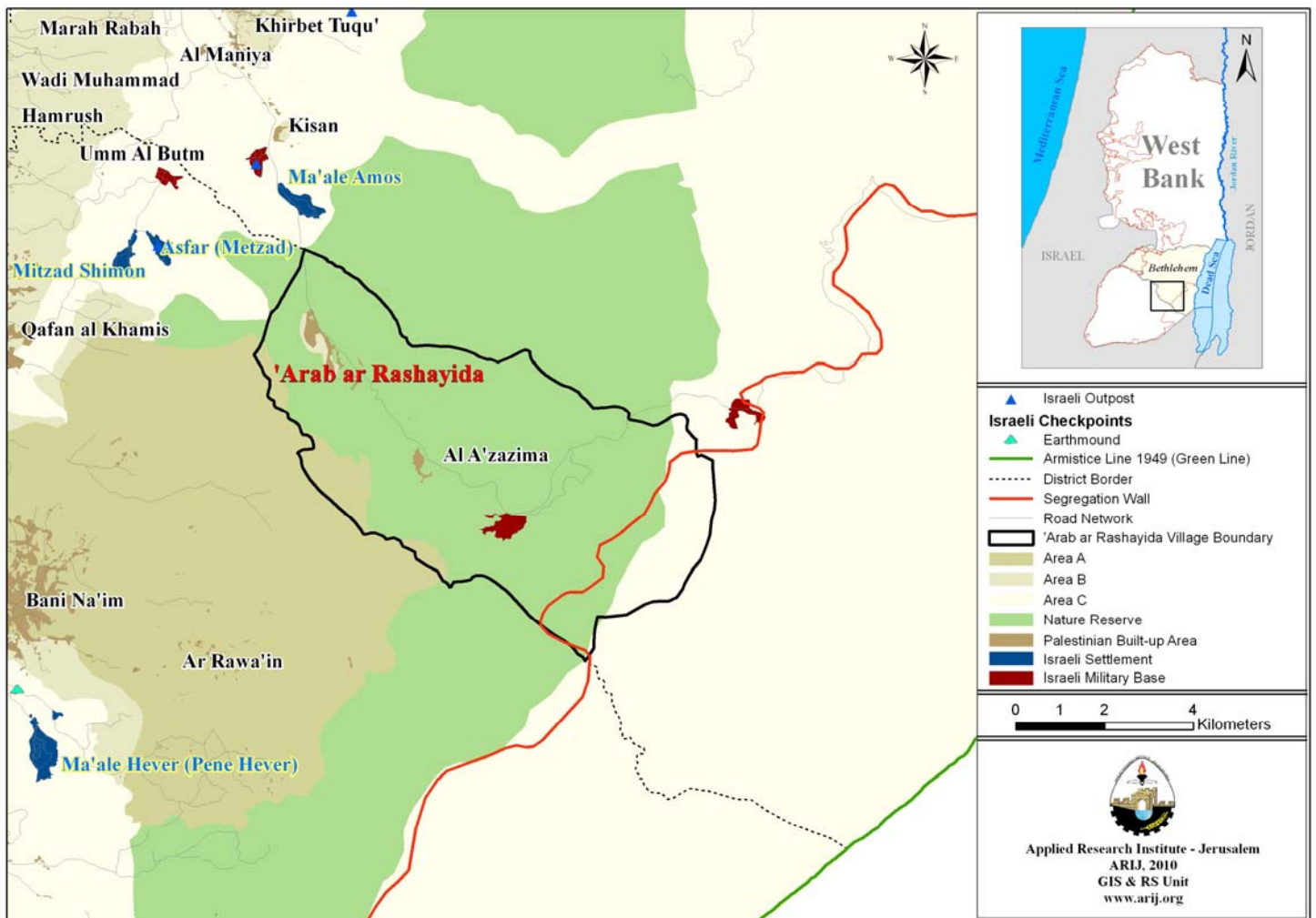
<i>Location and Physical Characteristics</i> _____	4
<i>History</i> _____	5
<i>Religious and Archaeological Sites</i> _____	6
<i>Population</i> _____	7
<i>Education</i> _____	7
<i>Health Status</i> _____	8
<i>Economic Activities</i> _____	9
<i>Agricultural Sector</i> _____	10
<i>Institutions and Services</i> _____	12
<i>Infrastructure and Natural Resources</i> _____	12
<i>Environmental Conditions</i> _____	14
<i>Impact of the Israeli Occupation</i> _____	15
<i>Development Plans and Projects</i> _____	18
<i>Implemented Projects</i> _____	18
<i>Proposed Projects</i> _____	18
<i>Locality Development Priorities and Needs</i> _____	19
<i>References:</i> _____	20

‘Arab ar Rashayida Village Profile

Location and Physical Characteristics

‘Arab ar Rashayida is a Palestinian village in Bethlehem Governorate located 18.7km (horizontal distance) south-east of Bethlehem City. ‘Arab ar Rashayida is bordered by Kisan village territories to the east, Kisan village and Amos settlement to the north, Sa’ir town territory, in Hebron government to the west, and Bani Na’im town territory in Hebron governorate to the south (See map 1).

Map 1: ‘Arab ar Rashayida location and borders



‘Arab ar Rashayida is located at an altitude of 512m above sea level with a mean annual rainfall of 246mm. The average annual temperature is 19.2° C, and the average annual humidity is about 58 percent (ARIJ GIS, 2009).

Since 1996, ‘Arab ar Rashaiyda has been governed by a village council which is currently administrated by nine members appointed by the Palestinian Authority. The village council owns a permanent headquarters and a private car.

It is the responsibility of the village council to provide a number of services to the residents of ‘Arab ar Rashaiyda, including:

1. Infrastructure services such as water and electricity.
2. Protection of religious, historical, and archaeological sites.
3. Implementation of projects and case studies for the village.

History

The village name ‘Arab ar Rashaiyda came in relation to Ar Rashaiyda tribe that exists in all parts of the Arab world, related to Rashid family.

‘Arab ar Rashaiyda village dates back to 1983, and its residents originate from the same region.

‘Arab ar Rashaiyda village also includes two other localities, which are: Ar Rawa’een and Al ‘Azazma.

Photo of ‘Arab ar Rashaiyda

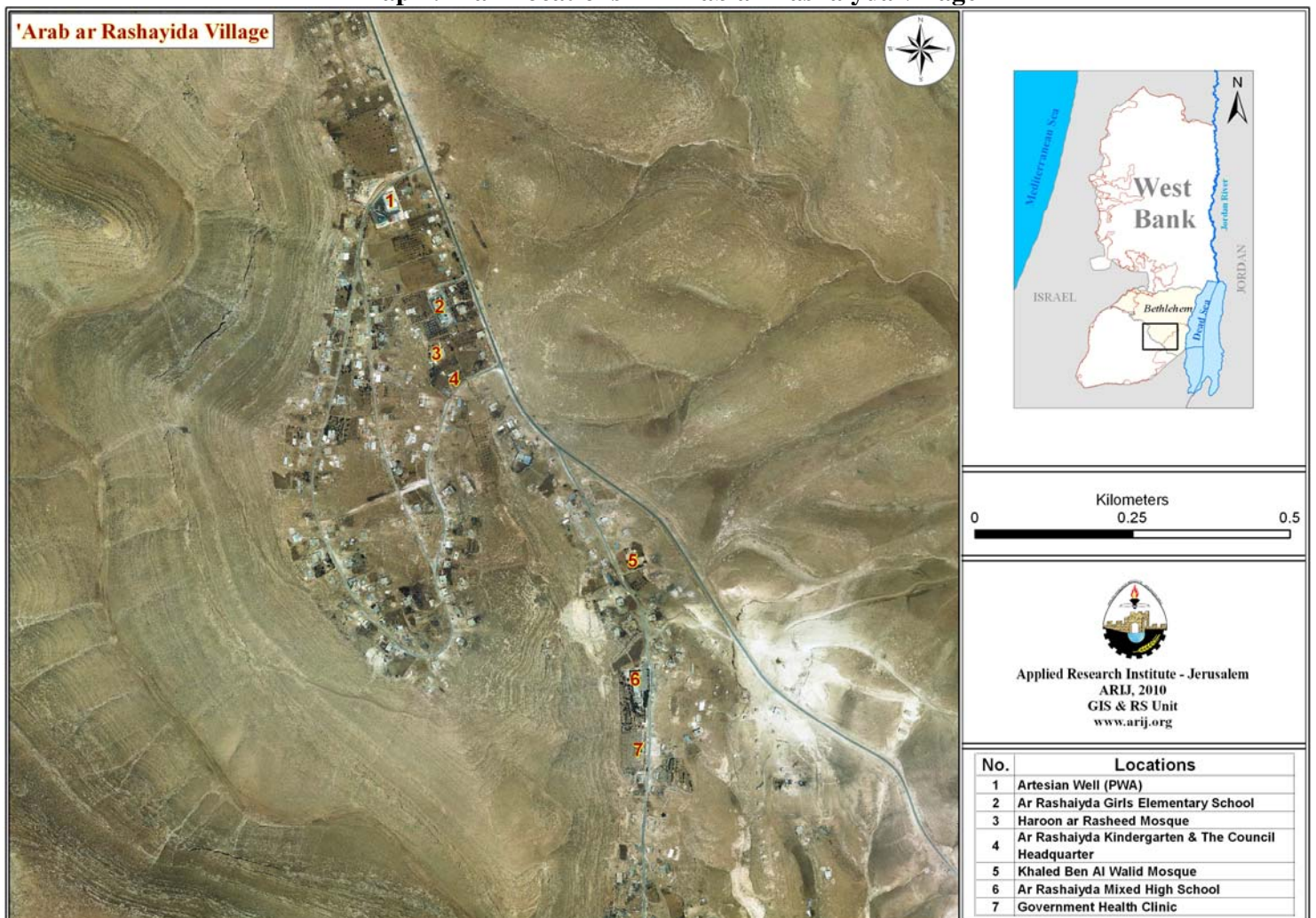


Religious and Archaeological Sites

In terms of religious establishments, there are two mosques in ‘Arab ar Rashayda: Haroon ar Rashid Mosque and Khaled Ben El Walid Mosque.

As for the archaeological and tourist sites in the village, there is Al ‘Erishah area, which overlooks the Dead Sea and which can be used for tourism (See map 2).

Map 2: Main locations in ‘Arab ar Rashayda village



Population

According to the Palestinian Central Bureau of Statistics (PCBS), the total population of 'Arab ar Rashaiyda in 2007 was 1,453; of whom 750 are males and 703 are females. There are 224 households living in 291 housing units.

Age Groups and Gender

The General Census of Population and Housing carried out by PCBS in 2007 showed that the distribution of age groups in 'Arab ar Rashaiyda is as follows: 50.4 percent are less than 15 years, 46.1 percent are between 15 - 64 years, and 2.4 percent are 65 years and older. Data also showed that the sex ratio of males to females in the village is 106.6:100, meaning that males constitute 51.6 percent of the population, and females constitute 48.4 percent of the population.

Families

The inhabitants of 'Arab ar Rashaiyda village are composed of several families, mainly: Al Basabsa, As Suna', Al Qreinat, Al Jreiyat, Ar Rweilat, As Sa'edat, Al Magharfa, Al Jwefieen, and As Sawarkah.

Education

According to the results of the PCBS Population, Housing and Establishment Census-2007, the illiteracy rate among 'Arab ar Rashaiyda population is about 23.8 percent, of whom 80 percent are females. Of the literate population, 41.6 percent can read and write, 33 percent had elementary education, 18.5 percent had preparatory education, 5.8 percent had secondary education, and 1.2 percent completed higher education. Table 1, shows the educational level in the village of 'Arab ar Rashaiyda, by sex, and educational attainment in 2007.

Sex	Illiterate	Can read & write	Elementary	Preparatory	Secondary	Associate Diploma	Bachelor	Higher Diploma	Master	PhD	Total
M	42	157	138	87	27	3	3	-	-	-	457
F	168	122	83	37	12	1	1	-	-	-	424
T	210	279	221	124	39	4	4	-	-	-	881

Source: PCBS, 2009. Population, Housing and Establishment Census-2007, Final Results

In regards to the basic and secondary educational institutions and schools in ‘Arab ar Rashaiyda in the academic year 2008/2009, there are two public schools in the village, run by the Palestinian Ministry of Higher Education (See Table 2).

In the village there is a total number of 343 students, 28 teachers, and 18 classes (Directorate of Education in Bethlehem, 2009). It should be noted here that the average number of students per teacher in the school is nearly 12, while the average number of students per class is approximately 19.

School Name	Supervising Authority	Sex
Ar Rashaiyda Girls Elementary School	Government	Female
Ar Rashaiyda Mixed High School	Government	Mixed

Source: Directorate of Education in Bethlehem, 2009

Furthermore, there is one kindergarten in ‘Arab ar Rashaiyda; Ar Rashaiyda Kindergarten, which is run by ‘Arab ar Rashaiyda village council and has a total number of 50 children (‘Arab ar Rashaiyda village council, 2010).

Health Status

There are no health facilities available in ‘Arab ar Rashaiyda village; there is only one mobile physician’s clinic run by the government. Also, there is no ambulance in the village.

In emergency cases, residents of ‘Arab ar Rashaiyda use Tuqu’ hospitals and health centers, such as: Tuqu’ Charitable Society, which is about 8km from the village, Tuqu’ Medical complex, which is about 8km from the village, and Tuqu’ Governmental Clinic, which is about 7km from the village.

The health sector in ‘Arab ar Rashaiyda faces many obstacles, mainly:

1. The absence of a permanent health center in the village.
2. The absence of an ambulance.
3. The absence of a pharmacy.
4. The absence of a dental clinic in the village.

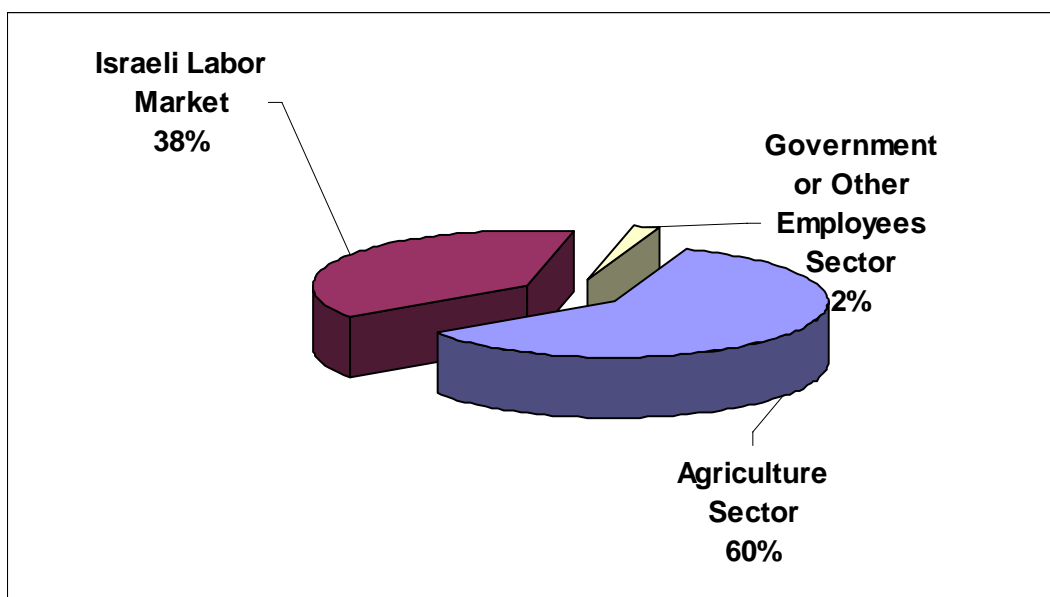
Economic Activities

The economy in ‘Arab ar Rashaiyda is dependent mainly on the agricultural sector, which absorbs 60 percent of the village workforce (See Figure1).

The results of a field survey for the distribution of labor by economic activity in ‘Arab ar Rashaiyda are the following:

- Agriculture Sector (60%)
- Israeli Labor Market (38%)
- Government or Other Employees Sector (2%)

Figure 1: Economic Activity in ‘Arab ar Rashaiyda Village



There are very few and almost non-existing businesses and industrial parks in ‘Arab ar Rashaiyda, as there are only two grocery stores in the village. However, ‘Arab ar Rashaiyda village is characterized with livestock rearing and the production of animal products, such as milk, cheese and meat.

The unemployment rate in ‘Arab ar Rashaiyda has reached about 70 percent. It was found that the most vulnerable social groups in the town, as a result of Israeli actions, are:

1. Former workers in Israel.
2. Workers in agricultural activities and livestock rearing.

Labor Force

According to the PCBS Population, Housing and Establishment Census-2007, 27.6 percent of ‘Arab ar Rashaiyda population was economically active, of whom 14.4 percent

were employed, 72.4 percent were not economically active, 38.9 percent were students, and 43.6 percent were housekeepers (See table 3).

Table 3: 'Arab ar Rashaiyda population (10 years and above) by sex and employment status-2007

S E X	Economically Active				Not Economically Active						Total
	Employed	Currently Unemployed	Unemployed (Never worked)	Total	Students	House-keeping	Unable to work	Not working & Not looking for work	Other	Total	
M	33	113	94	240	145	4	32	-	35	216	457
F	2	1	-	3	103	274	31	-	13	421	424
T	35	114	94	243	248	278	63	-	48	637	881

Source: PCBS, March 2009. Population, Housing and Establishment Census-2007, Final Results

Agricultural Sector

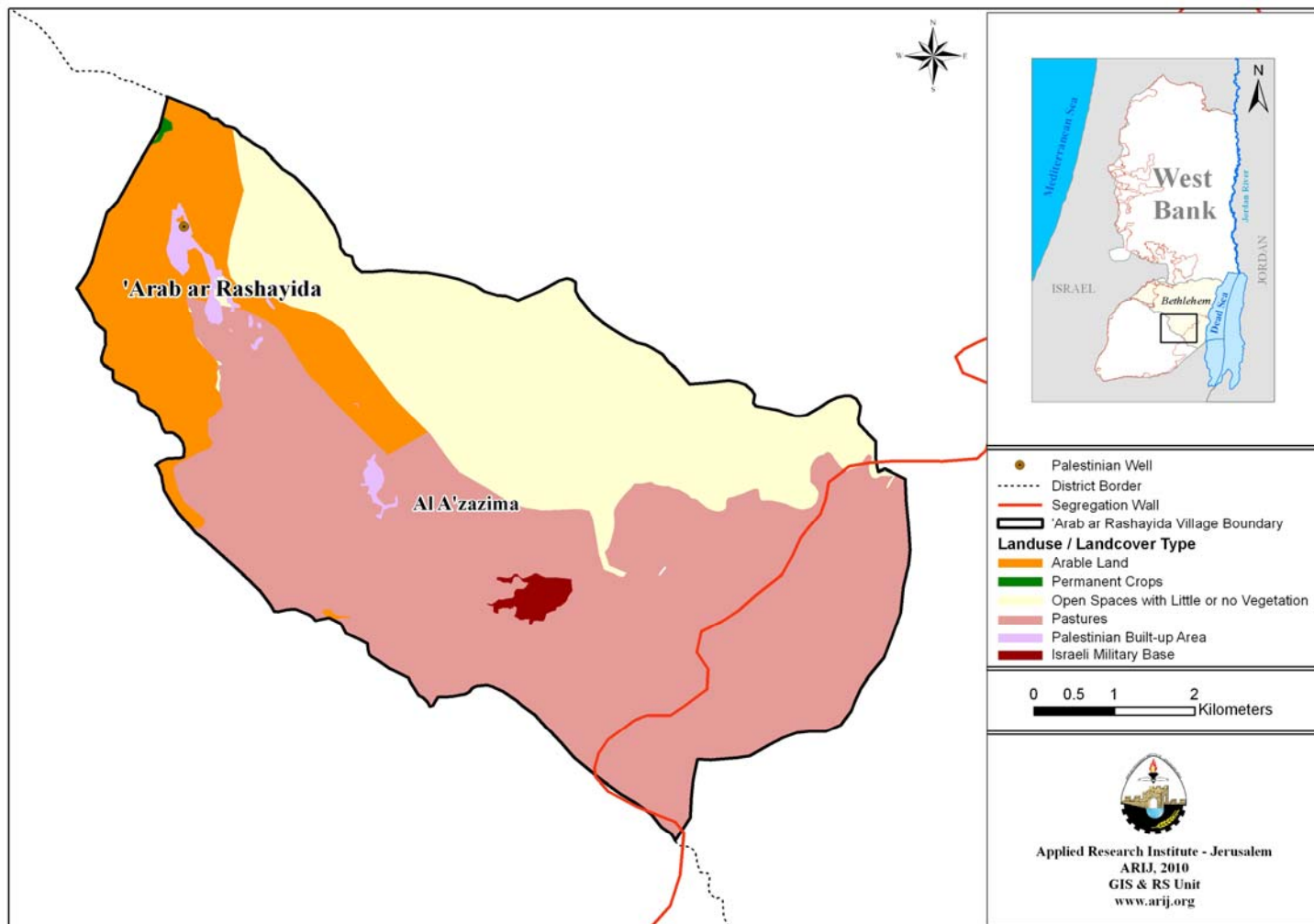
'Arab ar Rashaiyda lies on a total area of about 47,841 dunums of which 47,005 dunums are considered arable land, and 483 dunums are residential land (See table 4 and map 3).

Table 4: Land Use in 'Arab ar Rashaiyda village (dunum)

Total Area	Built up Area	Arable Land (47,005)					Area of Industrial, Commercial & Transport Unit	Area of Settlements and Military Bases
		Seasonal Crops	Permanent Crops	Greenhouses	Forests	Open Spaces and Rangelands		
47,841	483	6,723	34	0	0	40,248	0	353

Source: GIS unit – ARIJ, 2008

Map 3: Land use/land cover and Segregation Wall in ‘Arab ar Rashayida Village



Agricultural production in ‘Arab ar Rashayida depends mostly on rainwater. As for irrigated fields, they depend on domestic harvesting cisterns.

Table 5 shows the different types of rain-fed and irrigated open-cultivated vegetables in ‘Arab ar Rashayida. The most common crop cultivated within this area is tomato.

Table 5: Total area of rain-fed and irrigated open cultivated vegetables in ‘Arab ar Rashayida village (dunum)

Fruity vegetables		Leafy vegetable		Green legumes		Bulbs		Other vegetables		Total area	
RF	Irr.	RF	Irr.	RF	Irr.	RF	Irr.	RF	Irr.	RF	Irr.
0	4	0	1	0	0.5	0	0	0	1	0	6.5

Rf: Rain-fed, Irr: Irrigated

Source: Palestinian Ministry of Agriculture, 2007

As for the field crops and forage in ‘Arab ar Rashayida, cereals, in particular, wheat and barley are the most cultivated covering an area of about 260 dunums, while forage crops,

such as common vetch and bitter vetch, are the second most cultivated crops (See table 6).

Cereals		Bulbs		Dry legumes		Oil crops		Forage crops		Stimulating crops		Other crops		Total area	
Rf	Irr	Rf	Irr	Rf	Irr	Rf	Irr	Rf	Irr	Rf	Irr	Rf	Irr	Rf	Irr
260	0	0	0	12	0	0	0	17	0	0	0	0	0	289	0

Rf: Rain-fed, Irr: Irrigated

Source: Palestinian Ministry of Agriculture, 2007

The field survey shows that 60 percent of the residents in 'Arab ar Rashaiyda are rearing and keeping domestic animals such as sheep, goats, and broiler chicken (See Table 7).

Cows*	Sheep	Goats	Camels	Horses	Donkeys	Mules	Broilers	Layers	Bee Hives
0	6,991	6,109	370	23	40	8	3,600	0	0

*Including cows, bull calves, heifer calves and bulls

Source: Palestinian Ministry of Agriculture, 2007

There are about 5 kilometers of agricultural roads in the village suitable for tractors and agriculture machinery.

Institutions and Services

'Arab ar Rashaiyda has a village council which was established in 1996 by the Palestinian National Authority, but there are no associations, committees, centers, or sport or cultural clubs in the village ('Arab ar Rashaiyda village council, 2010).

Infrastructure and Natural Resources

Electricity and Telecommunication Services:

'Arab ar Rashaiyda has been connected to a public electricity network; served by Jerusalem Electricity Company, which is the main source of electricity in the village.

However, only 1.9 percent of the housing units in the village are connected to the network, while 96.8 percent of the housing units do not have any source for electricity, and only 1.4 percent of the housing units are dependent on private generators for electricity (PCBS, 2007).

Furthermore, 'Arab ar Rashaiyda has no telecommunication network in the village ('Arab ar Rashaiyda village council, 2010).

Transportation Services:

Taxis are considered the main means of transportation within 'Arab ar Rashaiyda; there are 4 taxis in the village. As for the road network in the village; there are a total of 8km of main roads, which are paved and in good condition, and a total of 3.5km of secondary roads, which are paved but in bad condition ('Arab ar Rashaiyda village council, 2010).

Water Resources:

'Arab ar Rashaiyda is provided with water by the West Bank Water Department, through the public water network established in 1983. About 67.6 percent of the housing units are connected to the water network, 31.5 percent are dependent on the purchase of water tanks, and 0.9 percent are dependent on rainwater harvesting cisterns (PCBS, 2007). The quantity of water supplied to 'Arab ar Rashaiyda in 2008 was about 0.0297 million cubic meters/year therefore, the estimated rate of water supply per capita is about 89 liters/day (PWA, 2008).

Here it should be noted that many 'Arab ar Rashaiyda citizens do not in fact consume this amount of water due to water losses, which are about 50 percent. The losses happen at the main source, major transport lines, distribution network, and at the household level ('Arab ar Rashaiyda village council, 2010), thus the rate of water consumption per capita in 'Arab ar Rashaiyda is 45 liters per day. This is a low rate compared with the minimum quantity proposed by the World Health Organization, which is 100 liters per capita per day.

Sanitation:

'Arab ar Rashaiyda lacks a public sewage network; thus, 25.9 percent of 'Arab ar Rashaiyda's housing units are connected to cesspits where generated wastewater are collected, while the majority of 'Arab ar Rashaiyda's housing units (74.1%) don't have any means for wastewater collection and disposal (PCBS, 2007).

Based on the estimated daily per capita water consumption, the estimated amount of wastewater generated per day, is approximately 52 cubic meters, or 19 thousands cubic meters annually. At the individual level in the village, it is estimated that the per capita wastewater generation is approximately 36 liters per day. The wastewater collected by cesspits, are discharged by wastewater tankers directly to open areas or nearby valleys without any regard for the environment. Here it should be noted that there is no

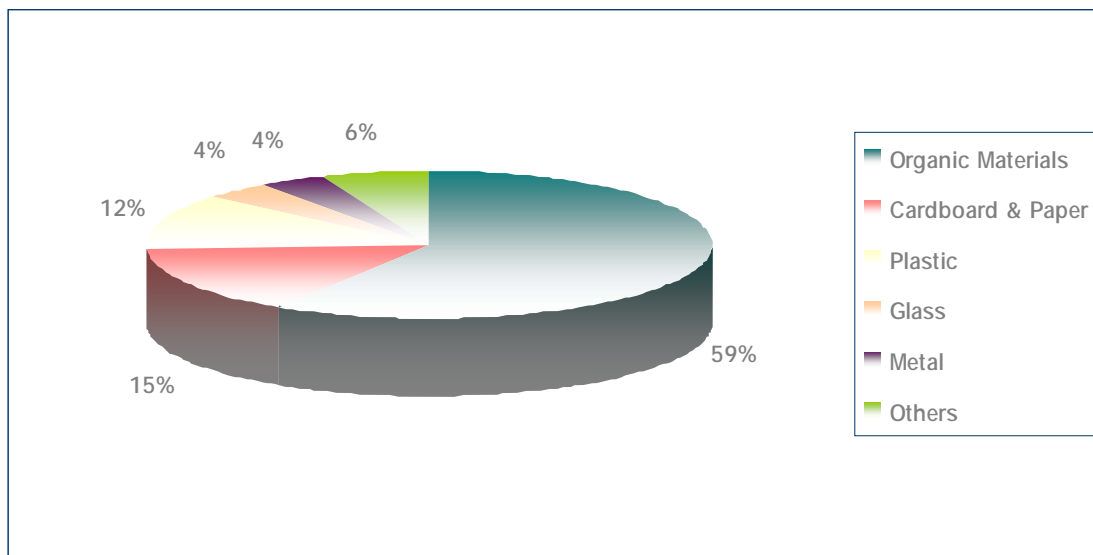
wastewater treatment either at the source or at the disposal sites and this poses a serious threat to the environment and the public health.

Solid Waste Management:

‘Arab ar Rashaiyda village lacks a solid waste management service, i.e. solid waste collection and disposal, generated from the citizens.

The daily per capita rate of solid waste production in ‘Arab ar Rashaiyda is 0.7kg. Thus the estimated amount of solid waste produced per day from the ‘Arab ar Rashaiyda residents is nearly 1 ton, or 371 tons per year. The main component of household solid waste is composed of organic materials, followed by paper, cardboard, and then plastic, as shown in Figure 2 below.

Figure 2: The components of the household solid waste produced



Environmental Conditions

Like other villages in the governorate, ‘Arab ar Rashaiyda experiences several environmental problems which must be addressed and solved. These problems can be identified as follows:

Water Crisis:

Water is cut off for long periods of time in summer in, for several reasons:

- (1) Israeli domination over Palestinian water resources; accordingly, supplying Palestinians communities with insufficient water quantities to cover their domestic needs.
- (2) High rate of water losses, because the water network is old, and in need of rehabilitation and renovation. Moreover, the practices of citizens like creating illegal connections, water theft, and damaging water meters increase the proportion of water losses.
- (3) Many homes are not connected to the public water network.
- (4) Many housing units lack rainwater harvesting cisterns; thus they suffer from periods of water shortage.

Wastewater Management:

The absence of a public sewage network, thus, the use of cesspits by some citizens for the disposal of wastewater, where the majority of citizens have no means for wastewater disposal, and thus the discharge of wastewater in the streets and neighboring lands, causes environmental damages, health problems, and the spread of epidemics and diseases in the village. Moreover, the use of cesspits pollutes the groundwater because most cesspits are built without lining, which allows wastewater to enter into the ground and avoids the need to use sewage tankers from time to time.

Solid Waste Management:

Due to the lack of a solid waste management service in addition to the lack of a central sanitary landfill to serve 'Arab ar Rashaiyda village, the citizens dispose of waste in the neighboring lands and on the roadsides, and set it on fire from time to time, in order to reduce its size. These practices constitute a hazard risk for the health and a source of pollution to the groundwater and soil through the leachate produced from the solid waste, it pollutes the air with smoke and gases resulted from the burning of such wastes, and it creates bad odors and distortion of the landscape. It should be noted here that in cooperation with the Joint Council for solid waste in Bethlehem governorate, a solid waste management service will be provided for 'Arab ar Rashaiyda village, in addition to a sanitary landfill which is currently under construction in Al Maniya area, south of Bethlehem governorate, to serve Bethlehem and Hebron governorates.

Impact of the Israeli Occupation

On September 13, 1993 the Palestine Liberation Organization and Israel signed the Declaration of Principles, which provided for a transitional period of 5 years. On May 4, 1994 Oslo I Agreement (Gaza and Jericho) was signed, where areas in the West Bank and

Gaza Strip were transferred to the Palestinian national sovereignty. On September 28, 1995 Oslo II Agreement was signed and new areas of the West Bank and Gaza Strip were also transferred to the Palestinian national sovereignty, including ‘Arab ar Rashaiyda village, which was divided into several areas, as follows:

- **Area A:** where the Palestinian sovereignty is absolute.
- **Area B:** where administrative issues are under the Palestinian National Authority's responsibility and security matters are under Israeli control.
- **Area C:** where security and administrative sovereignty is under Israeli control.

According to Oslo Interim Agreement, 2735 dunums of ‘Arab ar Rashaiyda lands (5.7 percent of the total area of the village) were classified as area A, 521 dunums (1.1 percent of the total area of the village) were classified as area B, and 4857 dunums (10.2 percent of the total area of the village) were classified as area C. As for the remaining part of ‘Arab ar Rashaiyda lands, 39,728 dunums, they were classified as nature reserves. It should be noted here that most of the agricultural lands and open spaces are located in area C, under the Israeli full control (Table 8).

Land Classification	Area (dunums)	% of the Total Area
Area A	2735	5.7
Area B	521	1.1
Area C	4857	10.2
Nature Reserves	39,728	83
Total Area	47841	100

Source: GIS unit –ARIJ, 2009

‘Arab ar Rashaiyda residents suffer from the practices of the Israeli occupation army, who are stationed in the Israeli military base south-east of the village, as the Israeli occupation forces are, continuously, invading the village, inspecting homes and arresting people. Moreover, the total area of the Israeli military base is 353 dunums, which Israel has confiscated following its occupation of Palestinian territories in 1967. It is also noted that the occupation army camps have a great negative impact on the lives of Palestinian citizens, namely from the psychological, economical, and agricultural aspects. Also, the shooting of the army forces who are training at the military base, near their village raises terror and fear in the hearts of citizens and poses a threat to their lives, which may lead them to leave the village in the near future.

Furthermore, the Israeli occupation forces prevent the villagers from grazing their sheep in open areas in the village, by chasing and shooting at them in an attempt to prevent them from coming to the place again, under the pretext that they are illegally located in Area C.

The dilemma of construction in area C

Due to the fact that most of ‘Arab ar Rashaiyda village territories are located in areas C

and natural reserves, which are under full Israeli control, according to Oslo Agreement, the Palestinian citizens living in these areas are obliged to obtain construction permits from the Israeli Civil Administration in the region. However, the Israeli Civil Administration imposes difficult conditions on the Palestinians who are seeking construction permits for their lands located in area C, and charges them very high fees, thus leading the village inhabitants to build without permission due to their desperate need for houses in keeping up with the population growth and agricultural needs. On July 21, 2005, Israeli bulldozers demolished five tents and five sheep stockyards in the village, under the pretext of unauthorized construction. Moreover, on August 17, 2005, the Israeli occupation authorities handed 'Arab ar Rashaiyda village residents 20 military orders notifying them to evacuate their lands and about the demolition of five animals stockyards, in order for the military to construct a section of the racist Segregation Wall on the village territories.

Israeli bypass roads network in the Occupied Palestinian Territory

During the years of occupation, the Israeli occupation forces have established a bypass road network in order to create a kind of territorial contiguity between the Israeli settlements, outposts, and military bases in the West Bank, whereas these roads have isolated the Palestinian communities from each other, and caused material and agricultural losses. 'Arab ar Rashaiyda was also affected by the establishment of the bypass road network, as it lost part of its territories for the construction of Israeli bypass road no. 3698 which extends for 12.5km on the village territory.

The Segregation Wall

According to the updated Segregation Wall plan published on the web page of the Israeli Ministry of Defense in April 30, 2007; the Segregation Wall will extend for 6.4km on 'Arab ar Rashaiyda lands, from the south-eastern area; thus isolating and confiscating 7,167 dunums of the village territory (15% of the total area of the village). Table 9 shows the lands isolated behind the wall in 'Arab ar Rashaiyda village:

Table 9: The impact of the Israeli Segregation Wall on 'Arab ar Rashaiyda Land Use/Land Cover areas	
Item	Total Area (in Dunums)
Arable Land	7126
Forests & Open spaces	41
Total	7167

Source: ARIJ database- GIS, 2008

Development Plans and Projects

Implemented Projects

'Arab ar Rashaiyda village council has implemented several development projects in 'Arab ar Rashaiyda, during the years 2007 to 2009, as shown in Table 10.

Name of the Project	Year	Donor
Construction of 'Arab ar Rashaiyda Kindergarten	2007	German Development Bank
Construction of First Floor for Ar Rashaiyda Girls School	2009	PECDAR & the Development Bank
Establishment of Electricity Network	2009	Ministry of Finance
Source: 'Arab ar Rashaiyda Village Council, 2010		

Proposed Projects

'Arab ar Rashaiyda village council, in cooperation with the civil society organizations in the village and the village residents, looks forward to the implementation of several projects in the coming years. The project ideas were developed during the PRA workshop that was conducted by ARIJ staff in the village. The projects are as follows, in order of priority, from the viewpoint of the participants in the workshop:

1. Supporting farmers and the agriculture production inputs.
2. Supporting livestock through the provision of feed and barracks.
3. Providing a health center and an ambulance.
4. Providing a veterinary center and an agricultural society.
5. Providing job opportunities.
6. Construction of agricultural roads.
7. Construction of agricultural wells.
8. Providing permanent transportations in the village.
9. Providing educational and awareness courses for the village residents.
10. Providing a dairy factory and a market for animal products.

Locality Development Priorities and Needs

'Arab ar Rashaiyda suffers from a significant shortage of infrastructure and services. Table 11 shows the development priorities and needs in the village, according to the village council's point of view ('Arab ar Rashaiyda Village Council, 2010):

No.	Sector	Strongly Needed	Needed	Not a Priority	Notes
Infrastructural Needs					
1	Opening and Pavement of Roads	*			26km*
2	Rehabilitation of Old Water Networks	*			3km
3	Extending the Water Network to Cover New Built up Areas	*			3km
4	Construction of New Water Networks	*			5km
5	Rehabilitation/ Construction of New Wells or Springs			*	
6	Construction of Water Reservoirs		*		100m ³
7	Construction of a Sewage Disposal Network		*		5km
8	Construction of a New Electricity Network		*		2km
9	Providing Containers for Solid Waste Collection		*		100 containers
10	Providing Vehicles for Collecting Solid Waste		*		1
11	Providing a Sanitary Landfill				
Health Needs					
1	Building of New Clinics or Health Care Centres	*			1 clinic
2	Rehabilitation of Old Clinics or Health Care Centres			*	
3	Purchasing of Medical Equipment and Tools	*			
Educational Needs					
1	Building of New Schools			*	
2	Rehabilitation of Old Schools		*		elementary & secondary
3	Purchasing of New Equipment for Schools	*			elementary & secondary schools
Agriculture Needs					
1	Rehabilitation of Agricultural Lands	*			3,000 dunums
2	Building Rainwater Harvesting Cisterns	*			50 cistern
3	Construction of Barracks for Livestock	*			200 barracks
4	Veterinary Services	*			
5	Seeds and Hay for Animals	*			
6	Construction of New Greenhouses	*			200 greenhouses
7	Rehabilitation of Greenhouses	*			
8	Field Crops Seeds	*			
9	Plants and Agricultural Supplies	*			

*8km is a main road, 3km internal road and 15km agricultural road.

References:

- *Applied Research Institute - Jerusalem (ARIJ)*. (2008 - 2009). Bethlehem, Palestine: Geographic Information Systems and Remote Sensing unit Database, 2009.
- *'Arab ar Rashaiyda Village Council*. 2010.
- *Directorate of Education - Bethlehem*. 2008/2009. Bethlehem, Palestine: A database of schools.
- *Palestinian Central Bureau of Statistics*. 2009. Ramallah, Palestine: General Census of Population and Housing Censuses, 2007.
- *Palestinian Ministry of Agriculture (MOA)*. 2007/2008. Bethlehem, Palestine: Directorate of Agriculture data.
- *Palestinian Water Authority*. 2009. Ramallah, Palestine: Quantities of Water Supply in the West Bank Governorates, 2008.